

THE RAINBOW

Box Art Group Newsletter - Friday 29th September
2023

Written by and for the members of Box Art Group (No. 90)

Contents

- A South Dakota Winter
- Golden Days – Cows and Beetroot
- Dragonfly Wings
- AGM Notes
- Exhibition notes
- Nearby Events

A South Dakota Winter

At the end of the last Art Group's Summer season I was working on a painting which I have eventually finished, just in time, as the new season starts soon, or has already started perhaps. I was fortunate enough to go to the Dakotas in the USA a few years ago and along with witnessing a Pow-wow (a mixed tribal meeting of indigenous people's where traditional costume dancing and all manner of other events take place), or driving down a very lonely road where I could see nothing except a fence and grass 360 deg. around the car and for miles around and not another car seen for hours. I also drove slowly amongst a massive herd of American Buffalo. The best thing to do! This has always stuck in my mind since that trip and from some of the photographs I took at the time of these magnificent animals, I created this imaginary scene as they all have to be somewhere in winter! Painted in Oils. Titled: 'An Itokaga Dakhóta waniyetu' Lakota for the perhaps obvious ... 'A South Dakota winter'.

Tony H



Golden Days.....cows and beetroot!

This summer my husband and I celebrated our Golden Wedding Anniversary, 50 years of married life together (which is fast becoming a rare occurrence in our changing world.)

Our plans to celebrate took up a great deal of my time, creating figures of all our family in icing for the cake, as well as looking after the garden and helping with grandchildren, which meant no time for painting.



Our family in icing.

Whilst sitting having a cup of tea one afternoon at the beginning of August I couldn't believe my eyes as a large cow poked her head through our garden hedge and started to eat my beetroot plants! I was shocked! My husband and I couldn't help laughing as we "shooed" it out of the hedge leaving a large hole urgently needing repair, and I replanted the beetroot hoping it would survive (which it did).

At the end of August, one hot summer's afternoon, I pulled some beetroot and was going to prepare it for tea. As I placed it on some newspaper, I was reminded of sketches and paintings of vegetables by my favourite artist Kurt Jackson and decided that instead of eating the beetroot I would do a painting of it. I liked the idea of painting it on the newspaper with some of the news showing through. I had to make up the leaf parts as the originals went limp but I was pleased with the final result, and thought I'd share my efforts with my fellow artists. Any comments would be welcome.

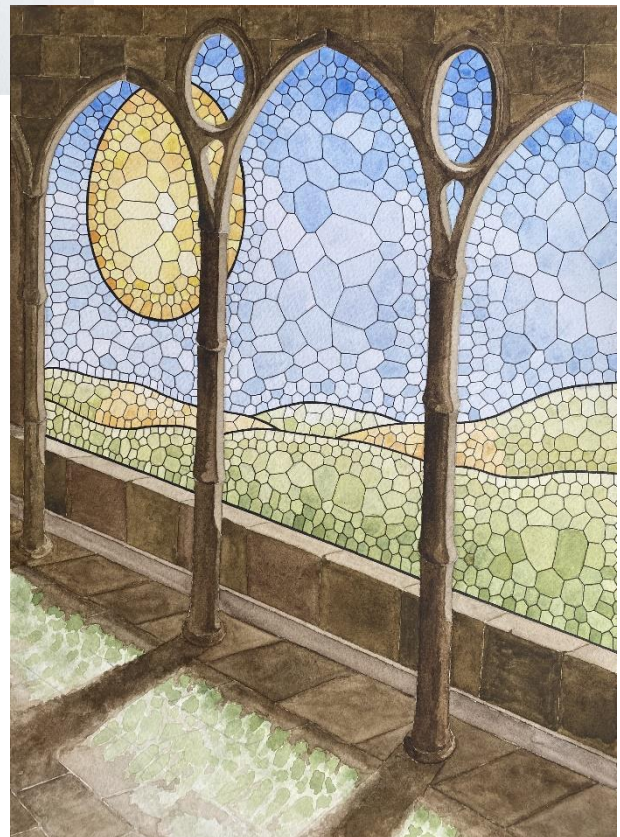
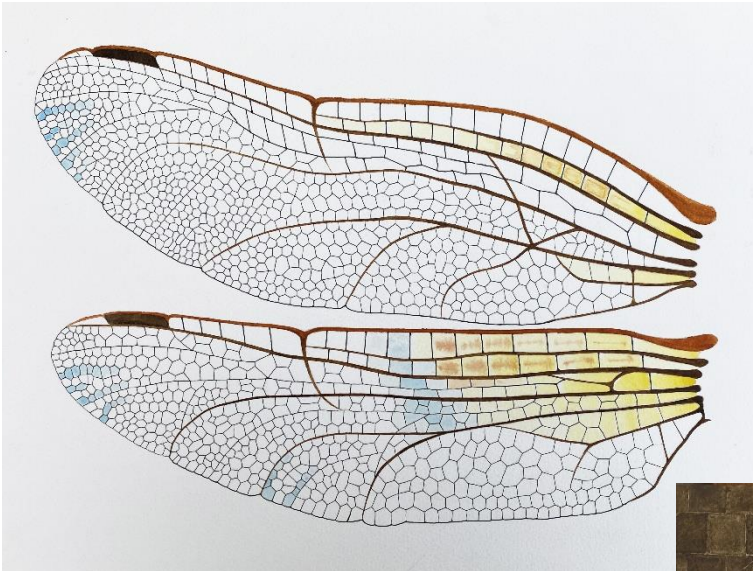
Mary Davis Smith.



Dragonfly Wings

Dragonfly wings 1 was a straight copy from a photo. Having done that and learned how the cells are constructed, Dragonfly wings 2 was painted from my imagination, using no reference. Noticing how much the cells in a dragonfly's wings resemble stained glass panels, I thought it'd be interesting to design a stained glass window. I painted the pillars and windows pretty much out of my head with little reference (perhaps it shows!). In watercolour, painted in July, August and September.

Richard B



AGM Notes

A few notes from the chairman after the AGM, held on 28th September 2023.

After a few years of this role, I still feel totally unsuited. However, I have great support from my committee, and given today's vote, from our members too. So thanks to you all.

The meeting went through the usual agenda fairly quickly, with just the one change on the committee which was Hilary standing down as vice-chairman, but retaining the membership secretary post. So a new vice chairman would be welcome...

I believe the finances and subs were presented and discussed fairly thoroughly, concluding with the probability that they would have to rise in September '24.

The most pertinent point was raised by David under AOB. This related to the summer gap in art sessions amounting to 3 months – June, July and August. Having given this point some thought, I've asked our committee how we might bridge this gap. The hall charge is £24 for the 3 hour booking, (£360 for 15 weeks) so we could look at ways to cover this especially if we restrict the hire to the meeting room only, (depending on numbers) and don't have a tutor or sitter. We would need someone responsible to open and close the hall, ideally a committee member, but I shall ask how members feel about this next week, on 5th October, to get a feel for the support for such a move. (or send me an email). Transport may be an issue.

I'd like to thank David for raising this issue, (and ask him to provide a parking demonstration in the near future.)

Talking of parking and transport, I generally provide a lift for one member from Minchinhampton to Box, but I have room for 2 more. I should like to improve our lift sharing, so please let me know if you would like a lift, and where from, and I'll try to get one of our hard-working committee to coordinate some lifts.

Exhibition Notes

The exhibition will be set up on Thursday 12th October, so leave your paintings, prints and cards for exhibiting in the hall between 1:30 and 2pm, but we won't be doing any painting as Roxy will be sorting out the display.

On the morning of Saturday 14th we are holding a coffee and cake event to support the exhibition, so donations of biscuits and cakes would be most welcome on the Saturday morning. I'll put a list on the notice board next week for members who plan to donate a cake to add their name and cake type. If it includes nuts or is gluten free, could you also add this and to a note when delivering it.

Please collect any unsold paintings at 5pm on Sunday 15th.

The Exhibition is open every day 10am until 5pm on Friday, Saturday and Sunday, 13th, 14th and 15th October, so please bring your family and friends along to see what we spend our Thursday afternoons doing.

The notes for stewards are below:

Sales Procedure

1. Place RED spot on label next to sold painting.
2. Fill in details of painting and purchaser with amount paid (deposit, at least 10%, or full amount) in receipt book. Give customer the top copy.
3. In the sales record book, fill in all paintings, framed and unframed.
4. Ask for email address if the purchaser wishes to be informed of future exhibitions. Any enquiries about membership, please refer to Hilary or provide form.
5. If the painting is part of the exhibition, ask the purchaser to collect it on Sunday at 5pm if possible. If not possible, purchaser may take painting immediately. Keep the title card for future use. Unframed prints and paintings may be taken away immediately.

6. Write 'SOLD' on catalogue.
7. Enter sales of cards on separate card form, under name of artist. Keep the card sales money separate from the rest.
8. If money is taken from a float, please ensure that it is replaced as soon as possible. If lack of change prevents this at the end of your shift, make a note for the next stewards, stating which pot the money has to be made up from, (e.g. card sales, picture sales, etc, so that it can be put back by them.

Other

Check that the pictures are straight.

Check the donations bowl.

Enjoy the exhibition and talking to visitors. Make yourself a drink if you wish.

Any problems, phone Hilary Turk on 01453 872611, Jill Harwood 01453 886233 or 0745650472 or Pete Smith on 01453 883611 or 07421219335

Nearby Events

The **Stroud School of Art Staff Show** is an exhibition by tutors at the SGS College in the gallery at the Museum in the Park until 1st October.

Exhibitions at the **Lansdown Gallery** during October are Layers of Memory open until 8th October, 11am to 4pm daily, and Celebrating Trees from 11th to 16th October from 10am to 5pm daily.

Stroud Valleys Artspace has several exhibitions at 4 John Street: unapologeticcommunicationplay finishes this Saturday, 30th; Black History Month is from 6th to 14th October; and Doorstep Wilderness is from 20th to 28th October.

The **Stroud Artists Cooperative** will be holding its Winter Exhibition at Lansdown Gallery (Stroud) from 25th October to 29th. There will be a late viewing on Friday 27th 6-9pm. Come along and say hello!

This is an Open Exhibition - which means that our members can submit any piece of art - so we get a really wide range of styles and media.