

# THE RAINBOW

Box Art Group Newsletter - Wednesday 23<sup>rd</sup> August  
2023

Written by and for the members of Box Art Group (No. 89)

## Contents

- Bristol Exhibition
- Kurt Jackson Exhibition
- Group Sketches
- For Sale
- Plein Air
- BAG Website
- Our Exhibition
- 

## Bristol Exhibition

*I'm delighted to share with you all that my film, 'Neuf-Brisach', has been selected for the 170th Royal West of England Academy of Arts Open Exhibition which will run from September 9th to January 14th in Bristol.*

*This is what they are saying about this year's exhibition.*

*"This dynamic, varied and uplifting exhibition includes a stunning array of painting, drawing, printmaking, photography, sculpture, installation and mixed media artworks, and is a showcase of some of the most exciting artists from across the country and beyond."*

*The call for entries that went out earlier in the year, attracted over 4,000 entries. These were all viewed and voted for on-line by the judges. The 1,000 entries that gained the most votes were shortlisted. The judges then gathered in Bristol and saw and discussed the shortlisted entries. From these, 400 were chosen for the exhibition.*

*On September 7th I shall be attending the Varnishing Day and Private View. Although the Varnishing Day is primarily a social event these days, it does give the artists the opportunity to make sure their work is hung as they would like before the doors open to the public. Think Turner at the Royal Academy in London adding his famous red spot. A couple of years ago, the sound for a film that I had had selected was too low so I was able to speak to the technicians who corrected it for me. It's important to be there if you can.*

*My film, 'Neuf-Brisach', is, in common with some of my other moving image work, an observation of a moment in time that might otherwise go unnoticed. I was in the French town of Neuf-Brisach on the border with Germany when I saw this tape (which is generally placed as it was on this occasion to prevent people entering a space) being caught by the wind, creating interesting shapes and shadows. That is what attracted me to it. But of course, retrospectively, if asked, I could say the film is a visual metaphor representing the barriers of national borders as people try to escape the tyranny of repressive governments. That's a very popular theme in art at the moment. But in all honesty, I just liked the way the tape moved.*

*If you happen to be in Bristol during the next three months and have time, do call in. It's like a smaller version of the London Royal Academy Summer Exhibition. I'm sure you'll find something that you'll enjoy seeing as well as find inspiration for your own work.*

Roxy





### **Kurt Jackson Exhibition**

On Thursday 20th July I visited the **Kurt Jackson 'River'** art exhibition at The Base, Greenham Newbury. It took over an hour to drive there but it was well worth the effort! I bought yet another of his lovely books and have since spent many hours pouring over his sketches and images.

(I believe the exhibition is on until 6th August)

Kurt Jackson is a Cornish based British artist and environmentalist, his paintings sell for many thousands worldwide. He is also currently my favourite artist. I first discovered Kurt Jackson in a magazine many years ago. There was a very small picture of a seascape. I tore it out because I loved the way the light reflected off the water.

Later I recognised the same style in another painting and became interested in finding out more about the artist.

A few years ago, some friends of ours from New Zealand were staying near Cirencester looking after the owners' pet dogs. I visited them and walked into a beautiful house which had 5 amazing paintings of river scenes. I recognised them immediately as Kurt Jackson's work and spent a precious few minutes just looking at them enjoying seeing the brush strokes and the way he painted water with light bouncing off reflecting the sky. I felt inspired and excited!

A beautiful seascape by Kurt Jackson. It would be interesting to find out from other members who their favourite artists are. *Mary Davis Smith.*



## Group Sketches

In the hall, the usual suspects.

*Jose*



## For Sale

We have two blank canvases left, and seven used ones, which could easily be painted over, all donated to the club by Alice Adams, which members might wish to buy, priced as follows:

### Canvases

10" x 12"	£2	1 off	painted
12" x 16"	£3	1 off	painted
12" x 18"	£3	1 off	painted
15.7" x 19.5"	£5	1 off	painted
18" x 24"	£7	1 off	painted
20" x 24"	£7	1 off	painted
20" x 30"	£8	1 off	painted
23.5" x 33.5"	£10	1 off	blank
25" x 30"	£10	1 off	blank

### Pastel pads:

12" x 16"	£10	1 off	30 pages of 6 neutral colours
9" x 12"	£5	1 off	30 pages warm colours
9" x 12"	£5	1 off	24 pages assorted colours
9" x 12"	£1	1 off	6 pages soft colours
8" x 11"	£3	1 off	30 pages assorted colours

### Oil Colour pad:

10" x 14"	£4	1 off	9 sheets 230gsm canvas texture
-----------	----	-------	--------------------------------

Two spiral sketch pads, £1 and 50p, and a 5 sheet 220gsm cartridge paper pad 22cm x 30cm £1

Two sheets Winton oil colour paper, canvas texture, 230gsm, 80cm x 55cm, £2ea.

Also a zipped A4 size portfolio case, £3, and a large studio easel, donated by Anne Chandler.

Please contact me on 883611 or [peter@lyonspace.co.uk](mailto:peter@lyonspace.co.uk) for details.

*Pete*

## Plein Air Minchinhampton and Stratford Park

I enjoyed two Thursday afternoons of painting outdoors and we even had some sunshine!

Jill Farrow joined me in Minch Churchyard where we both drew the spire. It was not the easiest subject to draw, and I hope we got the perspective more or less right.

I was joined for Wendy Fowler for the session in Stratford Park. We spent a pleasant time close to the Walled Garden chatting and drawing. Apologies to Wendy as I cut off some of her drawing. The sun was so bright, I couldn't see what I was doing on my phone!

I have recently bought a set of aqua brushes which I used to paint. I found them easy to use and excellent for small scale work outside and better than balancing a jar of water.

*Jill*

*Jill H*



*Jill F*

*Wendy*



*Jill H*





## The Box Art Group Website

The Group now has a new website. See <https://mcellin.me.uk/boxartgroup/>.

The website address may well change in the future, because - you may notice - I am currently hosting it as part of my own personal web domain. At present this means that it does not cost the Group anything, and it is easier for me to manage the development of the site. In future we may well find it more appropriate to purchase our own domain name (typically about £10 per year)<sup>1</sup>.

The new website has a several advantages over the previous web pages, which were hosted as part of the Box Village website. Firstly, I can maintain and adapt the site to our on-going and possibly changing needs (and you can tell me about those on Thursday afternoons) using tools with which I am personally familiar.<sup>2</sup> Secondly, it is easier to do things like providing an event calendar, and an archive of past newsletters. Most importantly, however, we can now maintain an active gallery of members' art work. I am currently trialing a system which will allow each of you, who request it, to have a link to one or more personal galleries, which you can maintain yourself. (You would not need me to upload, reorder or remove images.) I see no reason why you should not advertise your work for sale, if you wish, perhaps associated with a modest commission fee to Box Art Group, as at the annual exhibition. This is perhaps a topic for discussion at the AGM.

We provide these galleries by using Google Photos' "Cloud" storage arrangements. It turns out that as long as we do not generate large volumes of web traffic, we can use a modest amount of Cloud storage essentially for free, while making the Google Photos albums linkable from private websites. You can see some examples that are already populated with test content at <https://mcellin.me.uk/boxartgroup/index.php/members-galleries>. (I experimented with a number of alternative "gallery" management techniques: though this option was a little more complex to set up initially, it seems to lead to smallest on-going maintenance commitment for me and the greatest flexibility for members.)

The way it works, as far as you are concerned, is like this:

- I have created a Google account: *Box Art Work*, which comes with an email address [boxartwork@gmail.com](mailto:boxartwork@gmail.com), and a certain amount of free "Cloud" storage (15 GBytes, which should be more than adequate to our needs - up to several thousand images in total).
- You mail [boxartwork@gmail.com](mailto:boxartwork@gmail.com) the request that I create a web album associated with your name.
- I use a "Box Art Work" Google user account to create a new Google Photos Album whose title is your name.
- I then generate and send you a special "web link" - a string starting with something like <https://photos.app.goo.gl/....gobbledegook...>
- You must keep a record of this link (the best way is with a web browser "bookmark") but otherwise keep it private, because it gives "write" access to your Web Album.
- You post this link into the address line of a web browser, and press return.
- Now bookmark this link!
- When the browser follows the link you now see a page giving access to your album, with the capability to upload images (or delete, reorder, and title previous images that you have uploaded). We will go through how we do this in more detail below - though it can be as simple as "drag and drop".

---

<sup>1</sup> As long as I am a member of the Group, and as long as I maintain my own website, I am willing to provide the disk space and bandwidth to host the Group site. Buying a hosting service is normally the more expensive part of running a website. We could probably manage with a basic service from about £30/year.

<sup>2</sup> The technical nerds amongst you (do we have any?) may like to know that I have used a content management system called *Joomla*, that is widely used on the Internet and is flexible enough to do what we want without being so complex that it needs professional support. Above all, it is free, and I have used it before, so I had no learning curve! Should we decide to become independent hosting of my personal site, it is relatively easy to migrate the website to a new location. It is also not particularly hard to learn (if anyone else wants to take on the job of webmaster), and there are a fair number of people around who know how to drive it.

- After a short time the changes will then appear under the *Member's Galleries* page on our website. <sup>3</sup>
- There is a limit of 30 images in each Album. (You can in fact load more than 30 images to your Google Photo Album but only 30 will appear on our website - this is a limit imposed because I am using a free version of a commercial "extension" package for Joomla. We could pay to get the restriction lifted, but I do not think that it would be worth the fee since we would not be using the other features unlocked by the payment.) If you do want to display more than 30 images I can set up multiple albums in your name, say for different genres of your art. See my own experiments [here](#).
- If before uploading your photo you give it a "title" and/or "caption" with whatever photo management software you normally employ on your own computer, this title will appear under the image.
- It is possible to arrange that viewers of your gallery are allowed to add "comments". We should perhaps discuss which should be the default setting - it can be set either on/off for each album individually.
- I can, of course, advise people individually on managing their content.
- If you do not rejoin the Group, I will, of course delete your Album and its contents.

So to some extent this is an experiment. I have tried to make things as simple as possible for members (but no simpler). I welcome suggestions for additional content on the website, but I am going to try to keep the maintenance overhead as low as possible - I want time to do art!

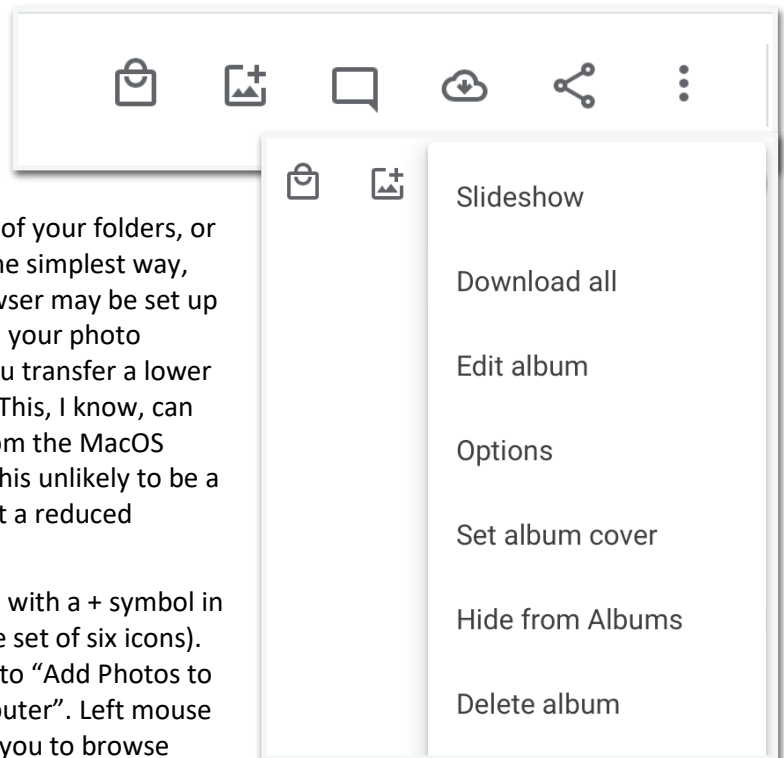
#### More Details of Album Management

Once you have pasted the link I supply into a web browser you will see a page which has the icons shown to the right here, which appear on the top right of the Google album page. There are now two ways in which you can add photos to your album.

Firstly you may find that you can "drag-and-drop" a photo image onto the page, from one of your folders, or your photo management application. This is the simplest way, but it is just possible, that your particular browser may be set up to disallow this. Furthermore, if you drag from your photo management application you may find that you transfer a lower than full resolution image to the web album. (This, I know, can happen on Mac computers, when dragging from the MacOS Photos application.) On the whole, however, this unlikely to be a problem, since Google Photos stores images at a reduced resolution anyway.

Secondly, you can left-mouse-click on the icon with a + symbol in its top right corner (second from the left in the set of six icons). This will open another page which invites you to "Add Photos to Album" and in particular to "Select from computer". Left mouse click on this to open a file chooser that allows you to browse images stored on your own computer. (Ignore the "Search your photos" box: it only searches the images already uploaded to this Google Photos cloud storage facility - yours and the albums of other Box Art Group members. We are all sharing the same space.)

The other important icon is the three dots on the far right: left mouse clicking on this brings up a menu - shown on the right.



<sup>3</sup> N.B. It may not happen instantly because we do not want our website to be constantly asking Google whether "anything has changed" in the Albums since we do not want to hit their "traffic limits". You may have to wait up to 15 minutes - it is one of the parameters with which I am currently experimented to get the best balance. Wait - it sorts itself out in time.

The most important item is the "Edit Album" option. Select this and you will find that you can delete items from the album. (Hover the mouse over an image and a cross will appear at the top level. Click in this to delete an image.) You can also add text to the album and descriptive text to each image. *N.B. removing an image from an album does not delete it from the BoxArtWorks cloud storage - it just means that it is no longer associated with the album. You need to "Move to Bin" to permanently delete an image.*

I do not intend to provide a complete guide to using Google Photos: there is plenty of material provided by Google (just Google "Google Photos Help") which does a more complete and definitive job than I could provide.

Please try it out and let me know how you go on. I have tried to make the process as simple as possible for you (but no simpler). All the alternative options required more effort and complexity for you (and especially for me).

*Michael*

## **Exhibition**

We will be holding our annual art exhibition in October when all members are invited to exhibit and showcase our variety of art work. You may exhibit

- up to **5 framed** art suitable for hanging. Fee £2 per item and 10% commission on sales
- up to **5 unframed**, but mounted art for the browsers. Fee 50p per item and 10% commission on sales
- **cards** for sale. No fee but 10% commission on sales

The commission goes towards the exhibition expenses and group funds. We hope that all paintings will be for sale but if you wish, you can exhibit **ONE** 'not for sale' painting only.

Please provide the following information about framed and unframed, mounted art on the **attached form** with the **hanging fee** to our treasurer, Michael McEllin

- email form to Michael at michael.mcellin@gmail.com and do a BACs transfer, *Box Art Group 30-98-29 Acc. 03922056* with your name as a ref
- at a meeting, cash or cheque
- post to Michael at Cheveril, 83 Windmill Road, Minchinhampton. GL6 9ED, cheque

Please would you do this as soon as possible and **28 September** at the very latest. We need to compile a catalogue of artwork and display labels before the exhibition from the information you provide. You might like to keep a copy of the form.

- Your Name
- Picture title
- Medium
- Price

### **This information should be included on**

- a label which you stick to the back of all your artwork **AND**
- a luggage type label on a string which can hang over the front of the picture.

This label' helps us to put the correct display label against the painting once hung on the wall. It is tucked behind the painting for the exhibition so it doesn't need to be smart!

### **Artwork should have**

- 2 D rings (or eyes) with tightly stretched cord or wire between them on the back of your painting
- NO CENTRAL FIXINGS please as these are more difficult to hang.

**Cards** should be in a protective envelope marked with your name and price (round figures ie £1.00, £1.50).

All items should be brought to the Village Hall between **1.30 and 2.00 pm on Thursday 12 October**. (there will be no class on that day).

**Unsold paintings should be collected at 5 pm on Sunday 15 October.**

We need your assistance with set-up & hanging, with publicity and to serve as stewards. If you want to exhibit, we really do need your help. Please complete your options for stewarding on the entry form and Hilary Turk will also be asking for volunteers.

There will be a coffee and cake morning on Saturday 14 October. Please promote the exhibition and encourage your friends and family to come along on one of the exhibition days.

**NAME:** (Please print) .....

**Framed art work or box canvasses for hanging on the walls, £2 fee per item**

	TITLE	MEDIUM	PRICE
1)			
2)			
3)			
4)			
5)			

**Unframed, mounted art for the browsers, 50p fee per item**

	TITLE	MEDIUM	PRICE
1)			
2)			
3)			
4)			
5)			

Please return this form and fee to **Michael McEllin by 28 September** at the very latest.

**See payment options and ways to return the form on the Exhibition letter**  
*(paid - cash/cheque/bank transfer to Box Art Group 30-98-29 Acc. 03922056)*

**Cards for sale** - yes/no (delete as appropriate)

**I will be available to steward at the following times.**

**Please give at least 2 options** – *first come first served basis – please circle*

1<sup>st</sup> choice:      Fri / Sat/ Sun 10am -12.30pm, 12.30 – 3pm, 3 – 5 pm

2<sup>nd</sup> choice:      Fri / Sat/ Sun 10am -12.30pm 12.30 - 3pm, 3- 5 pm or I can be available any time

**If you are exhibiting, you should be available for stewarding.** If you work or have commitments on any of the days and can only do certain times please let us know at the time of entering see above, and we will do our best to assist on a first come basis.

**All items are exhibited at own risk**

I confirm that all the paintings listed above are my own work and in no way breach the copyright of any third party. I also agree to indemnify the Box Art Group against any claim for any breach or alleged breach of copyright by me including legal costs.

Signed ..... Date .....